



RIEBEEK
VALLEY WINE CO

Winery Introduction Wine Portfolio

June 2021

Welcome to the Riebeek Valley Family - Guardians of Swartland.

Overview



- Discover Wine of South Africa
- Discover Wine of Origin Swartland
- Introduction to Riebeek Valley Wine Co
- Meet the Team
- Discover Our Award-Winning Wines



Wine of Origin **Swartland**





Swartland literally means 'the black land'. It takes its name from the now endangered renosterbos (rhino bush) which once turned the landscape a dark colour at certain times of the year.



The Swartland is a rugged place of untamed beauty and unique, distinctive terroir.
The Riebeek Valley is in the heart of the Swartland wine region.



The Swartland wine region is home to low-yielding bush vines, many older than 30 years, produce grapes with distinct character & concentrated flavours.

The dry-land conditions of the Riebeek Valley, in the heart of the Swartland wine region, results in low yields & small berries that produce wine with:

- intense fruit aromatics
- layered flavour profile
- vibrant colour
- good natural acid
- soft tannin structure





The terroir of the Riebeek Valley is mainly affected by a Mediterranean climate and diverse, prehistoric Sandstone and Shale soils from the majestic Kasteelberg Mountain. Both significantly influence the style and quality of our wines.



Our main cultivars most suited to our growing conditions and translate the most true-to-type characteristics are:
Chenin Blanc, Pinotage & Shiraz;
as well as Southern Rhone varietals: Marsanne, Grenache Blanc & Noir, Mourvèdre, Cinsault & Viognier.



RIEBEEK

VALLEY WINE CO

Whether we were born here or just arrived, one thing unites us - we love the Riebeek Valley.
We tend the land and reap its rewards, sharing the best of the Swartland with friends around the world.

We are the Riebeek Valley Wine Co.

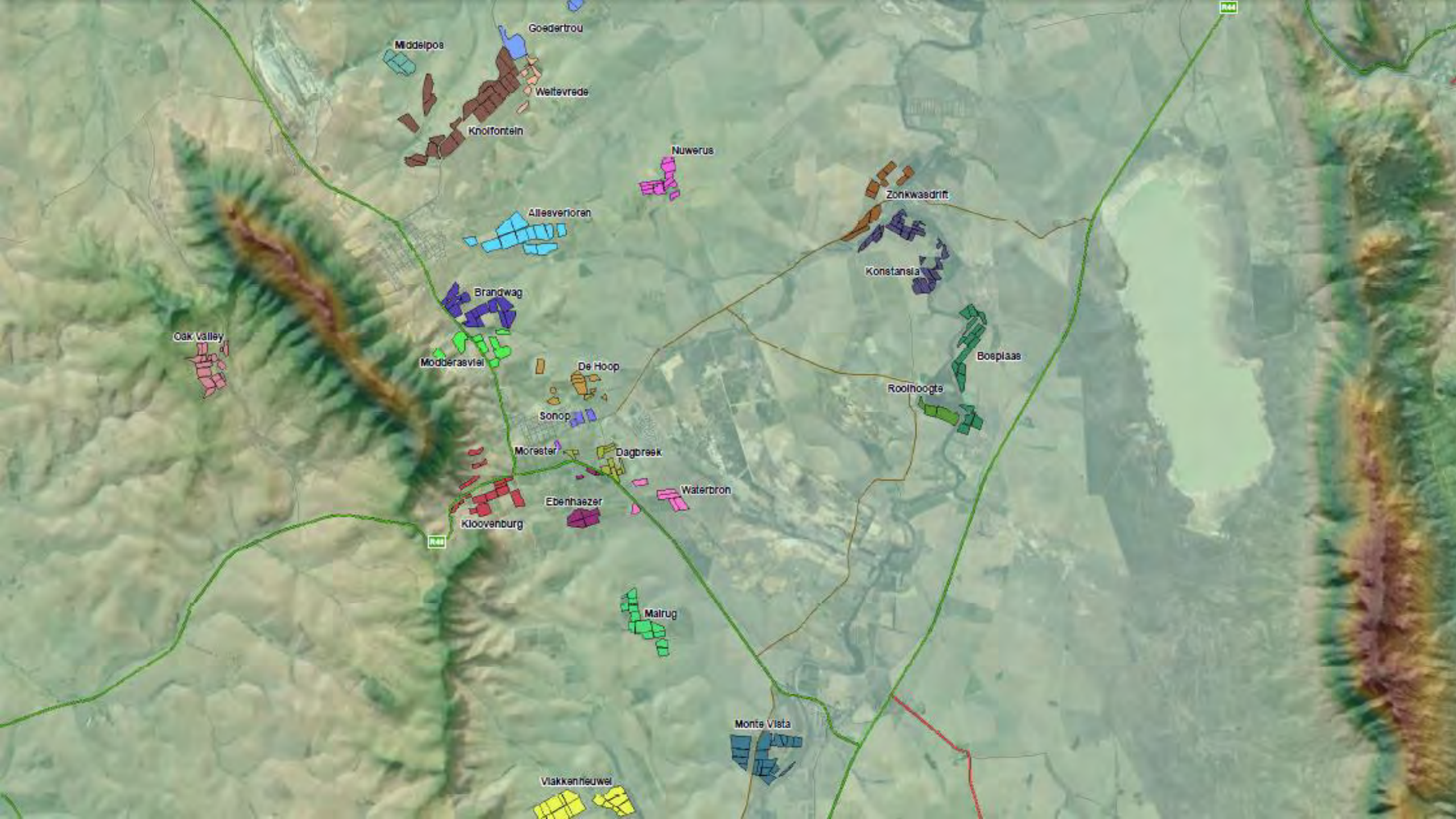
We are a collaboration of 22 local family farms and wine experts devoted to bringing the exceptional flavours of the Swartland to the world.

We love the Riebeek Valley, in the heart of the Swartland, and so will you



We are a Family owned winery.

22 Family producers throughout the Riebeek Valley have been producing the finest Swartland grapes for 4 generations to produce the renowned wines of Riebeek Valley Wine Co.



Oak Valley

Middelpos

Goedertrou

Weltevrede

Knolfontein

Nuwerus

Allesverloren

Brandwag

Modderasvlei

De Hoop

Sonop

Morester

Dagbreek

Waterbron

Ebenhaezer

Klooenvburg

Malrug

Monte Vista

Vlakkeneuwel

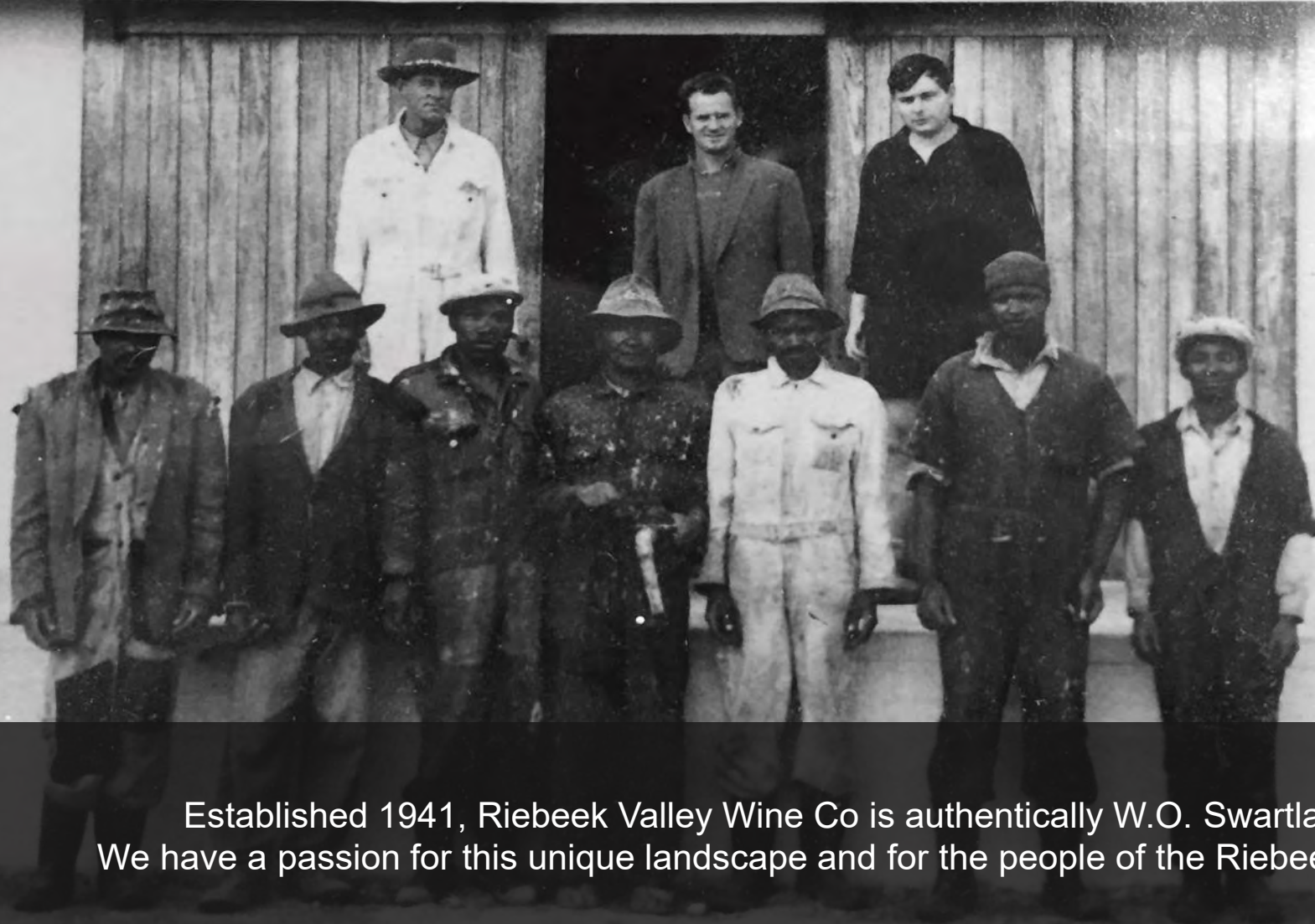
Zonkwasdrift

Konstansla

Boesplaas

Roolhoogte

KO-OPERATIEWE MSPY. BEPERK



EST.
1941

Established 1941, Riebeek Valley Wine Co is authentically W.O. Swartland.
We have a passion for this unique landscape and for the people of the Riebeek Valley.



Voted, **COOP OF THE YEAR** (Tim Atkin 2020 SA Report), our 22 family producers and our team of wine experts, are committed to preserving the heritage we have in our Swartland vineyards by producing quality wines with unique Swartland character.

— Our Values

Homegrown

We focus exclusively on W.O. Swartland because we believe it's the unique conditions present in the Swartland and the Riebeek Valley that provide us with the ingredients necessary to create unique products of exceptional quality.



Collaborative

The collective knowledge and experience of our producers, winemakers, viticulturists, employees, clients and all other stakeholders drives our creative passion, our innovation, our growth and enables the creation of our exceptional products and services.



Conscious

We ensure that we care for and respect all the factors that influence the products and services we create; be it the environment, our people, our clients, our community and the greater wine industry. This is how we are able to make sure our products and services are sustainable and relevant.

INTEGRITY &
SUSTAINABILITY

Certified

WINE AND SPIRIT BOARD
www.swsa.co.za

4477
796701



Main Services & Products:

1. BULK Wine
2. Contract Winemaking
3. Custom Crush & Services
4. Private Label Exclusive
5. Our own branded products





We are WIETA certified.

WIETA ensures ethical business, fair labour policies, and the highest level of health and safety standards.

We continuously improve our processes towards FSCC certification; while our BRC classification is covered by our shareholding in Paarl Valley Bottling Co. where we bottle all our wines.





MEET OUR WINE TEAM



WERNER ENGELBRECHT **CEO**

SHEREE NOTHNAGEL **Senior Winemaker**





JACQUES THERON: Senior Winemaker

THEMBILE NTLOKO Assistant Winemaker





THEMBA MSITHO Assistant Winemaker



KARA VAN ZYL **International Sales Manager**



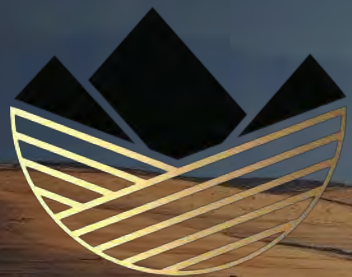


RIEBEEK
VALLEY WINE CO

MULTI-AWARD WINNING WINES

COOP OF THE YEAR
Tim Atkin 2020 SA Report





RIEBEEK

VALLEY WINE CO



Riebeek Valley Wine Co is devoted to bringing the exceptional flavours of the Swartland to the world.

In in every glass, expect multi-layered, purity of fruit with balance – taste pure Swartland.



Our award winning wines are distributed globally and enjoy local & international acclaim.



In in every glass, expect multi-layered, fruit-forward character with balance and velvety smooth tannins
— taste pure Swartland.

RIEBEEK &CELLARS COLLECTION



The Riebeek Cellars Collection is the sum of the land and the people of the Riebeek Valley.

Only the toughest vines and people thrive here.

Our wine celebrates the tenacity and courageous spirit in all of us.

Our wines are the reward for overcoming adversity.

Grapes from bush vine vineyards are becoming scarcer due to declining yields and increasing cultivation costs.

We know that these bush vine vineyards are Swartland's hidden gems.

We nurture our bush vine vineyards for the depth and breath they add to our Riebeek Cellars Chenin Blanc and other wines.





Our red wine fermentation and production capacity has been expanded, and we have extended the time the every vintage matures in in French oak barrels.

After the wine has been in French oak barrels for 9 months, larger batches are bottled a time to allow for further maturation in the bottle.



Vintage 2020
Cultivar 100% Chenin Blanc
Wine of Origin Swartland
Cellar Riebeek Wine Cellars, Riebeek Kasteel, Western Cape, South Africa
Wine Maker Jacques Theron
Vineyard Dry-land "Bosstok" Bush Vines and supplementary irrigated trellised vines. Average production: 10-14 tons per ha.
Harvest detail Early in February at an average of 22.5° Balling.

Cellar Treatment After settling and acid adjustment, on the free-run juice was inoculated with selected yeast to fermentation colder than usual to capture upfront fruit flavours. Two specially selected tanks were blended and stored on the fine lees to preserve freshness.

Tasting notes As the unofficial drink of the Riebeek Valley, The Royal Chenin Blanc is the perfect everyday wine that offers uncomplicated quality for the novice and connoisseur alike. Packed with upfront tropical fruit, the nose charms with an abundance of guava and gooseberries, balanced by a crisp acidity to ensure a fresh and fruity style of wine.

Serve Served well-chilled (8 to 10°C), the wine is exceptionally food-friendly.

Alcohol	13%
Residual Sugar	3.3g/l
Total Acidity	5.8g/l
pH	3.49





Vintage	2019
Cultivar	50% Cabernet Sauvignon and 50% Shiraz
Wine of Origin	Swartland
Cellar	Riebeek Wine Cellars, Riebeek Kasteel, Western Cape, South Africa
Wine Maker	Jacques Theron
Vineyard	Trellised vines with some supplementary irrigated Average production: 8-10 tons per hectare.
Cellar Treatment	Cold-soaked overnight. Inoculated with selected yeast. Fermentation temperature remained between 24 -26 degrees Celsius. Regular pump-overs were performed during fermentation. Different batches of unoaked wine, wine treated with French oak staves and wine matured in 2nd and 3rd fill barrels, were all blended together to perfection.
Tasting notes	Juicy and fruity, rich and ripe in style with blackberry, blackcurrant and spice flavors, subtle vanilla and black pepper. Smooth and well-balanced, a lingering finish of berries, spice and beautifully integrated oak.
Serve	Perfect companion to red meat dishes , game, duck, goose, pasta and cheese. Serve at room temperature.

Alcohol	14%
Residual Sugar	10.22g/l
Total Acidity	5.85g/l
pH	3.59



A BRIGHTER, LIGHTER STYLE OF WINE FOR
A SUPRISINGLY FRESH WINE EXPERIENCE.

Naturally lighter in
alcohol, mouth-
wateringly fruity and
slightly spritzzy,
Montino offers
surprisingly fresh and
lively wines.

Delicate, fruity & light!

montino



MONTINO MOSCATO

Cultivar

Muscat

Wine of Origin

Swartland, South Africa

Wine Maker

Jacques Theron

Viticulturist

Claude Uren

Vineyard

Based in a Mediterranean climate, on the foothills of the Kasteelberg Mountain, trellised vineyards in gravel Schist-based soils, require only supplementary irrigation.

Harvest detail

Only the finest Moscato grapes are harvest early in the morning when it is still cool to preserve freshness. They are harvested earlier in the harvest season, while the grapes have good natural acidity to balance the natural sweetness.

Cellar Treatment

Only free run juice is used for the purest fruit expression (i.e. no pressed grape must: as pressing the grapes add astringent flavours from the skins and pips. After settling and acid adjustment, the fresh grape must was inoculated with selected yeast. Fermentation was colder than usual to capture the delicate floral and upfront fruit flavours. The wine is bottled with CO2 in a Petillant style (lightly sparkling).

Tasting notes

A pale straw colour with a light green tinge, the bouquet is burst of Muscat grape aroma with peach notes and delicate orange blossoms. The flavours follow through on light, refreshing slightly-sparkling, spritzy palate. This elegant, lighter style Muscat wine is low in alcohol, while the mouth filling sweetness is well balanced by refreshing acidity and a lingering finish.

Serve

This wine should be served well-chilled. It is an ideal lunchtime wine, complementing light summer salads and tapas style meals. However, it is versatile enough to be served at any occasion.

TECHNICAL ANALYSIS

Varietals	100% Muscat
Alcohol	9%
Residual Sugar	27g/l
Total Acidity	5.9 g/l
pH	3.29



A woman with long blonde hair, wearing a blue t-shirt and white shorts, is riding a white bicycle through a vineyard. The scene is set during sunset, with warm golden light illuminating the landscape. In the foreground, a cocktail glass filled with a light green drink and garnished with a lime wedge sits next to a bottle of Montino Light Moscato. The bottle label features the brand name 'montino' in a stylized font, with 'montino' in green and 'Tino' in purple. Below it, 'montino' is written in black, followed by 'péssillant' and 'LIGHT' in smaller text, and 'SOUTH AFRICA' at the bottom. The background shows rows of grapevines and distant hills under a cloudy sky.

Summer Cocktail

MEXICO 70 + MONTINO LIGHT

48

MONTINO ROSE

Montino Natural Sweet Rosé offers an abundant bouquet of red berries in a refreshing, lightly sparkling wine.

Blending only the purest quality grapes, harvested earlier for lower natural sugar and alcohol, Montino offers a mouth-wateringly fruity, fresh and lively wine experience.

now

treat yourself



MONTINO ROSE

Cultivar Blend
Wine of Origin
Wine Maker
Viticulturist
Vineyard

Chenin Blanc, Colombard, Muscat, Pinotage
Swartland, South Africa
Eric Saayman
Tharien Hansen,
Based in a Mediterranean climate, on the foothills of the Kasteelberg Mountain, the trellised vineyards in gravel Schist-based soils, require only supplementary irrigation.

Harvest detail

Only the finest grapes are harvest early in the morning when it is still cool to preserve freshness. They are harvested earlier in the harvest season, while the grapes have good natural acidity to balance the natural sweetness.

Cellar Treatment

Only free run juice is used for the purest fruit expression (i.e. no pressed grape must: as pressing the grapes add astringent flavours from the skins and pips). After settling and acid adjustment, the fresh grape must was inoculated with selected yeast. Fermentation was colder than usual to capture the delicate floral and upfront fruit flavours. All varietals in the blend were vinified separately and blended to perfection before bottling with CO2 in a Petillant style (lightly sparkling).

Tasting notes

An irresistible juicy natural sweet rosé, Montino Rose is a pretty cherry pink with tempting crushed strawberry and Turkish delight aromas that explode in succulent candied red berry flavours. The light alcohol, lively wine is easy-drinking and a great lunch time wine.

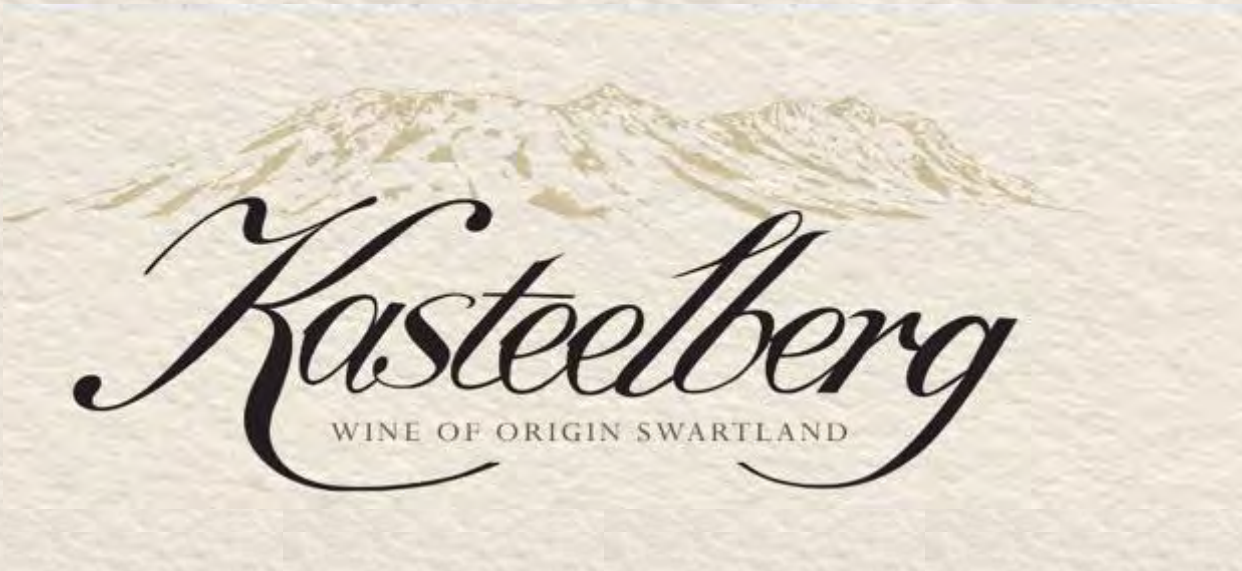
Serve

A fantastic summer wine served ice cold, or with picnics, curried chicken salads, BBQ burgers and sticky ribs.

TECHNICAL ANALYSIS

Varietal Blend	Chenin Blanc, Muscat, Pinotage
Alcohol	8%
Residual Sugar	70g/l
Total Acidity	6.1g/l
pH	3.4





Limited release, single-vineyard wines, from hand-selected grapes from the oldest and most special vineyards on foothills of the majestic Kasteelberg Mountain, the Kasteelberg range embodies excellent craftsmanship that transforms the harsh Swartland terroir into the pinnacle of our winemakers' art.

PINNACLE OF OUR WINEMAKERS' ART

The Kasteelberg range celebrates the discovery of the Kasteelberg mountains in 1661.
Kasteelberg stands sentinel over the fertile valley below.





CHENIN BLANC 2019

Limited release, single-vineyard Chenin Blanc from hand-selected grapes from the foothills of the majestic Kasteelberg Mountain, Kasteelberg Chenin Blanc embodies excellent craftsmanship that transforms the harsh Swartland terroir into the pinnacle of our winemakers' art.

Varietals:	100% Chenin Blanc
Production:	418 cases / 2 508 bottles
Wine of Origin:	Swartland
Technical Details:	Alc13.17 % • RS 1.4 g/l • TA 5.9 g/l • pH 3.46
Source of Grapes:	The wine is sustainably crafted from the best block of a dry-land, old, bush-vine vineyard, on the foothills of the Kasteelberg Mountain.
Yields:	Between 6 to 8 tons/ha

Winemaking & Maturation:

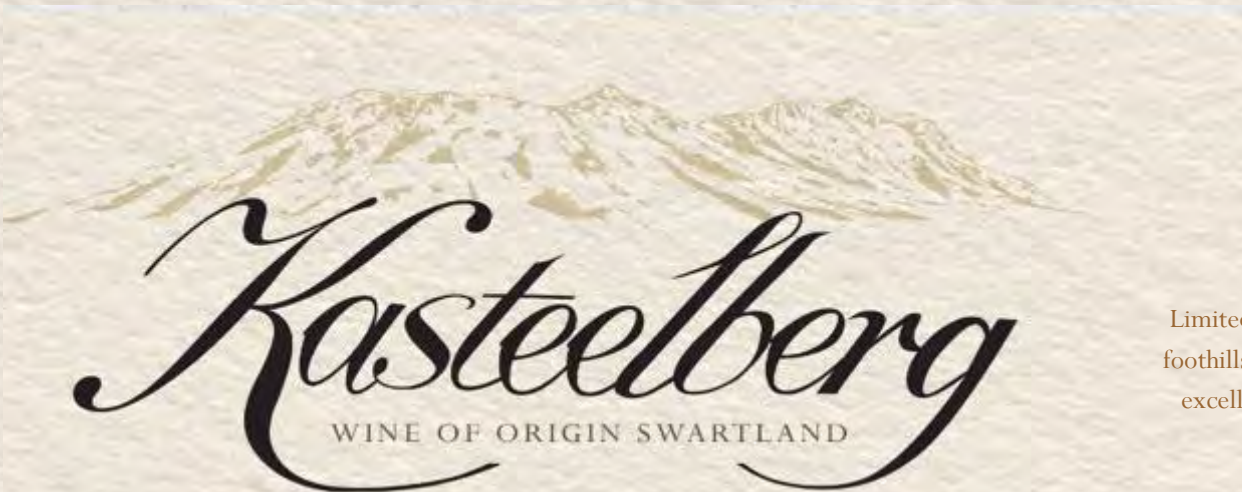
Once harvested, the grapes are hand-sorted, de-stemmed & crushed into temperature-controlled gravitational drainers. Only the free-run juice is chilled and settled overnight. The juice is then racked off into new and older (2nd & 3rd fill), 300L, oak barrels and wild yeast fermented in the barrels. Fermentation is temperature controlled and lasted around 22 days. The wine is then matured in the oak barrel on the gross lees for 12 months before being racked off, filtered and bottled. After bottling the wine is further bottle-matured for at least 6 months before release.

Tasting Note:

Together with the age-old tradition of Dry Land viticulture, it resulted in an elegant, aromatic and richly textured wine, with characteristics typical to Chenin Blanc grown under these conditions. Citrus, lemon zest, ripe apple and tropical flavours are only some of the flavours that charm the nose. The palate follows through with flavours of melon, a touch of spice and well-integrated wood for exceptional balance and a luxurious, lingering finish.

Best served at 10 to 12 °C, this wine will develop in complexity over the next 3 to 5 years.





PINOTAGE 2016

Limited release, single-vineyard Pinotage from hand-selected grapes from the foothills of the majestic Kasteelberg Mountain, Kasteelberg Pinotage embodies excellent craftsmanship that transforms the harsh Swartland terroir into the pinnacle of our winemakers' art.

Varietals: 100% Pinotage

Production: 980 cases / 5 880 bottles

Wine of Origin: Swartland

Technical Details: Alc 14.26 % • RS 2.3 g/l • TA 5.7 g/l • pH 3.55

Source of Grapes: The wine is sustainably crafted from the best block of a protected, 22 year-old, bush-vine vineyard, on the foothills of the Kasteelberg Mountain.

Yields: Between 6 to 8 tons/ha

Winemaking & Maturation:

Once harvested, the grapes are hand-sorted and crushed into an open fermenter. Cold maceration lasts for 2 – 3 days for colour and soft, supple tannin extraction. Wild yeast fermentation lasts 7 – 8 days with regular, hand punch-downs. The initial fermentation temperature rises to 28 °C to lose volatile esters and is then brought down and closely monitored to stay below 25 - 26 °C. After fermentation, the wine is left on the skins for 7 – 8 days for further tannin development. This is followed by malolactic fermentation also on the skins. Using a traditional basket press, the wine is pressed into 2nd & 3rd fill 300L French oak barrels. After 14 months of maturation in the barrels, the wine is racked, filtered and bottled. After bottling the wine is further bottle matured for at least 6 months before release.

Tasting Note:

The 2016 Kasteelberg Pinotage offers an abundance of seductive ripe cherries and rich, dark plums and a hint of subtle spice. Supple and elegant, the finish is long and luxurious.

Best served at 16 to 18 °C, this wine will greatly benefit from decanting if drunk within the first 3 to 5 years after bottling.





SHIRAZ 2018

Limited release, single-vineyard Shiraz, from hand-selected grapes from the foothills of the majestic Kasteelberg Mountain, Kasteelberg Shiraz embodies excellent craftsmanship that transforms the harsh Swartland terroir into the pinnacle of our winemakers' art.

Varietals:	100% Shiraz
Production:	630 cases / 3 780 bottles
Wine of Origin:	Swartland
Technical Details:	Alc15 % • RS 3.4 g/l • TA 5.6 g/l • pH 3.39
Source of Grapes:	The wine is crafted from the best block of a single vineyard, deeply rooted in decomposed granite soil, on the foothills of the Kasteelberg Mountain.
Yields:	Between 6 tons/ha

Winemaking & Maturation:

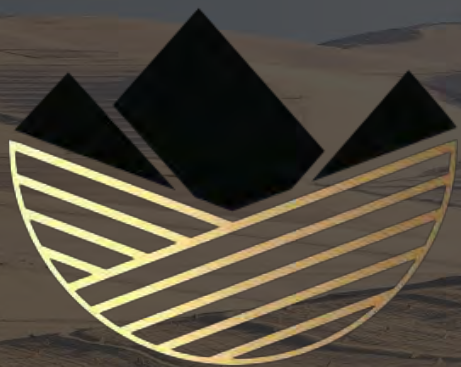
Once harvested, the grapes are hand-sorted and crushed into an open fermenter with up to 30% whole bunch fermentation. Cold maceration lasts for 2 – 3 days for colour and soft, supple tannin extraction. Wild yeast fermentation lasts 7 – 8 days while being closely temperature controlled to stay below 25 - 26 °C with regular hand punch-downs. After fermentation, the wine is left on the skins for 7 – 8 days, for further tannin development followed by malolactic fermentation also on the skins. Using a traditional basket press, the wine is pressed into 300L new French oak barrels. After 16 months of maturation in the barrels, the wine is racked, filtered and bottled. After bottling the wine is further bottle-matured for at least 6 months before release.

Tasting Note:

The Swartland terroir is home to rich, nuanced, silky Shiraz and the 2018 Kasteelberg Shiraz is no exception. Rich black fruit, liquorice and hints of spice charms the nose. The palate follows through with black currents and complex baking spice. Full-bodied and rich, the velvety tannin structure offers a long, well-integrated finish.

Best served at 16 to 18 °C, this wine will greatly benefit from decanting if drunk within the first 3 to 5 years after bottling.





RIEBEEK
VALLEY WINE CO

THANK YOU

CONTACT INFORMATION

International Marketing & Sales: Kara van Zyl

kara@riebeekwineco.co.za

+27 22 448 1213

+28 84 580 0205

www.riebeekvalleywineco.co.za